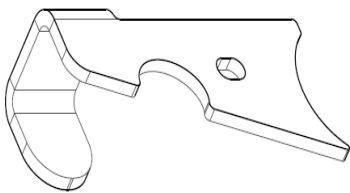


## Introduction

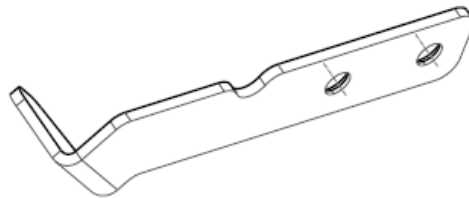
Committed to continuous improvement across our entire range of products to enhance operational efficiency, durability, and health and safety, we have recently developed a spring protection bracket kit for your OmniDEL bin lifts that have been implemented as a standard feature on production bin lifts since Q2 2025.

These brackets help to protect bin lift springs from external impact or damage while simultaneously reducing the risk of the spring ejecting in the direction of operators in the event of a failure and are now available as a retrospective kit.

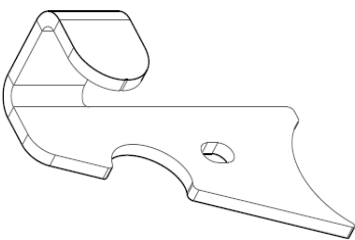
Four additional parts are designed:



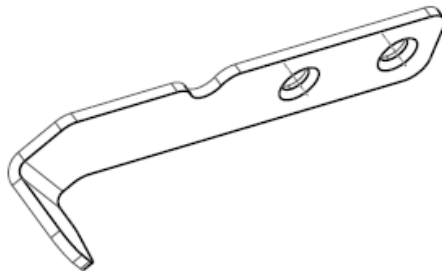
P/N 345770 bracket LH front



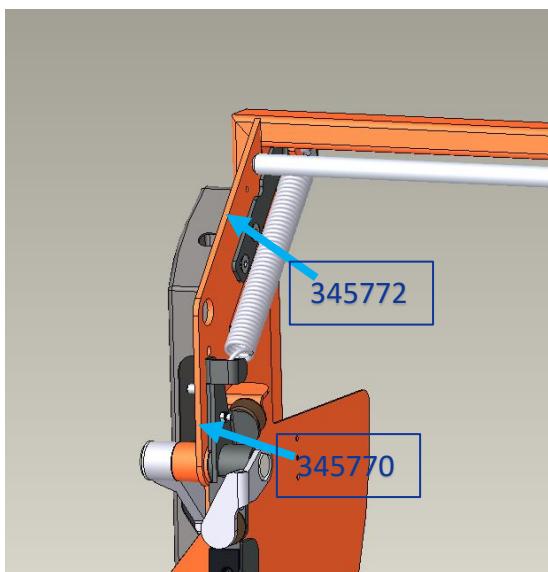
P/N 345772 bracket LH rear



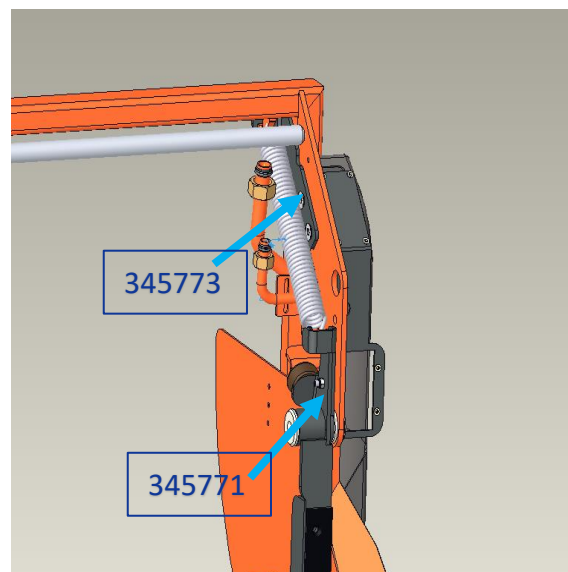
P/N 345771 bracket RH front



P/N 345773 bracket RH rear



Location on the LH side



Location on the RH side



Required parts:

ID	QTY	P/N	Description
1	1	345770	Bracket front LH
2	1	345771	Bracket front RH
3	1	345772	Bracket rear LH
4	1	345773	Bracket rear RH
5	2	08105	Bolt M8x25
6	2	08895	M8 self-locking nut
7	4	08707	M8 washer
8	4	08578	M12x40 VK
9	4	08899	M12 self-locking nut
10	4	08711	M12 washer

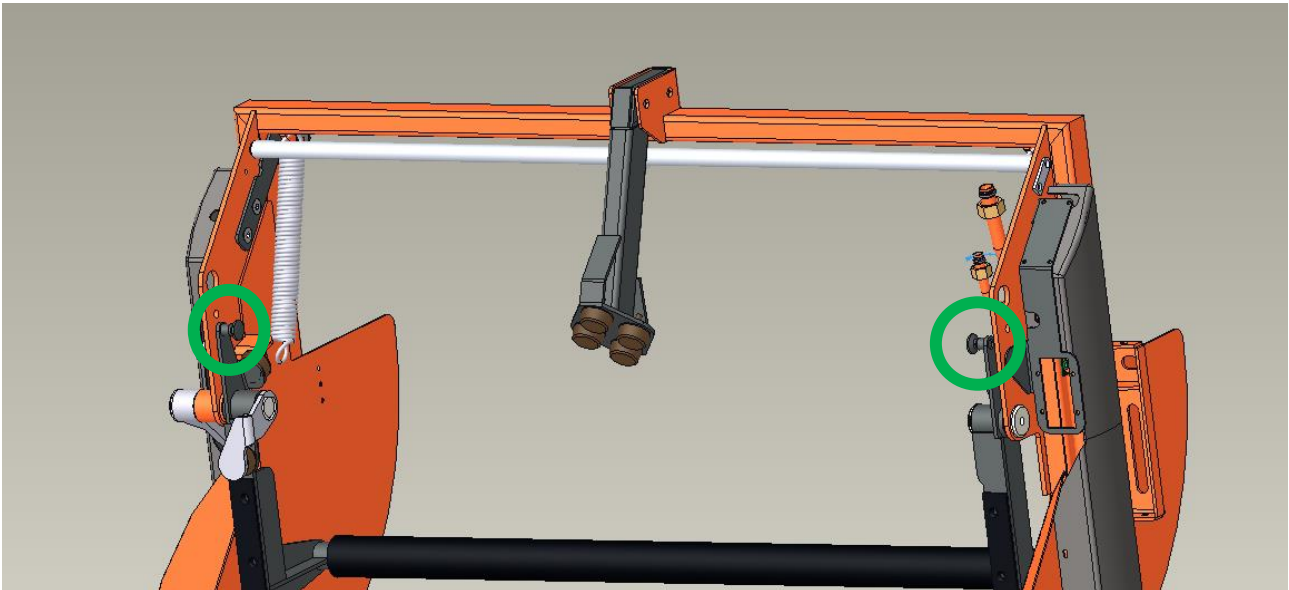


## Mounting instruction

**!Attention!** Make sure that every step of the instruction manual is being executed in a secure and safe working environment.



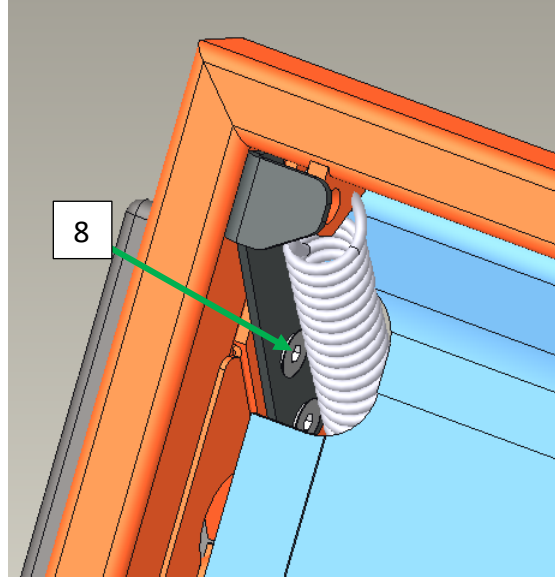
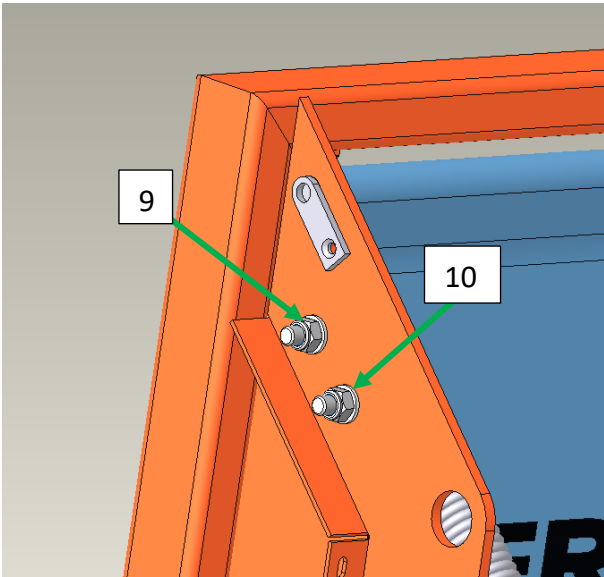
1. Remove catcher bar springs at bottom side





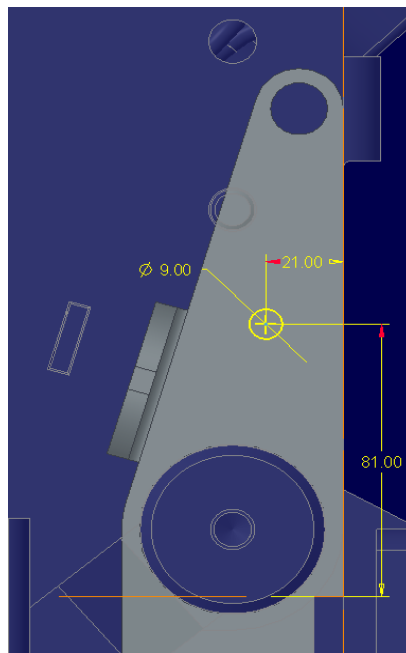
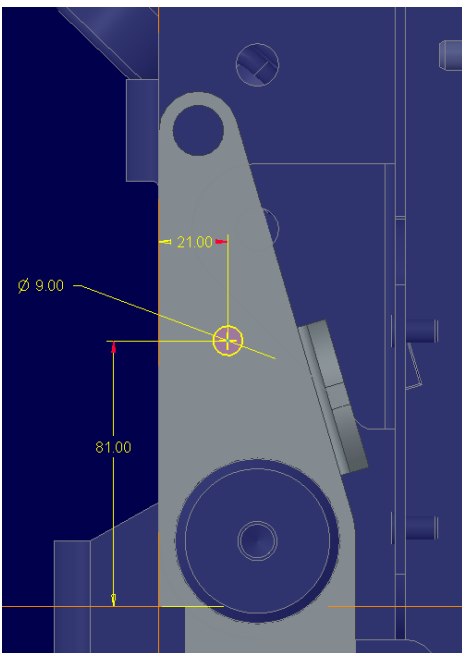
2. Mount 345772 & 345773

ID	Qty	P/N	Description
8	4	08578	M12x40 VK
9	4	08899	M12 self-locking nut
10	4	08711	M12 washer



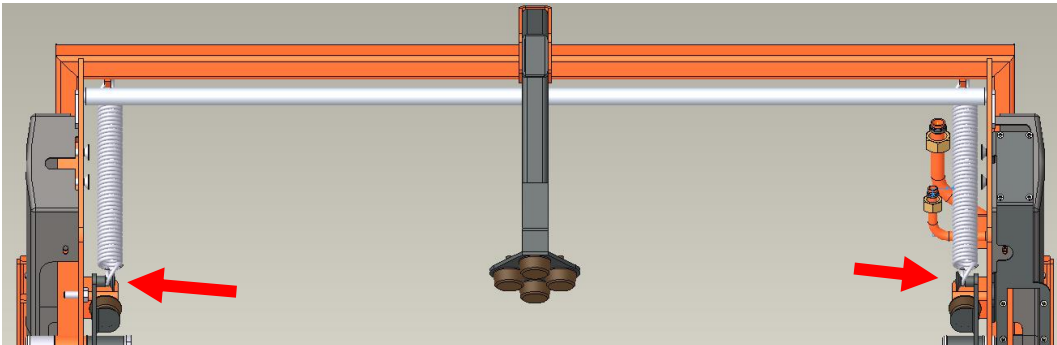
3. Drill holes

- 37021 See image L below.
- 37022 See image R below.





4. Reinstall the catcher-bar springs



5. Now push the catcher bar down so that there is room to assemble 345770 and 345771.

ID	Qty	P/N	Description
5	2	08105	M8x25
6	2	08895	M8 self-locking nut
7	4	08707	M8 washer

